

# THE HISTORY OF EAA 172

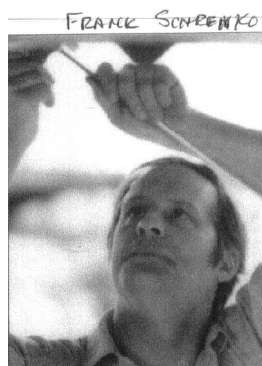
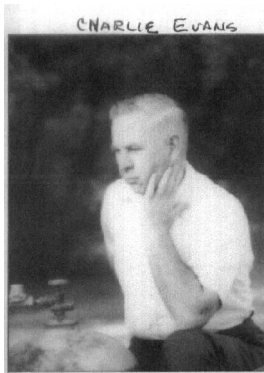
## PART III

With photos archived by Al Patton with some of his margin notes.

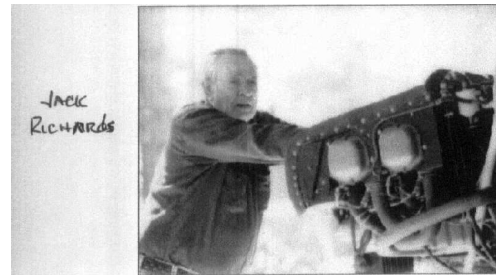
**Below are more photos with margin notes. Most were taken back at the old Pea patch – Patton Field.**

*Keep in mind these are at least 5th generation photos – 35 mm black & white photos were taken many years ago, the negatives transferred, then they were scanned, put on someone's Website (now defunct), which was printed out 9 years ago, then from those pages scanned again for this newsletter.*

Some of those in the photos have passed away, such as Charlie Evans who was an A&P and leased the Wrens airport hangar for his business and aircraft building until mid 1995 when he died. If you have information about any of these please e-mail the club Secretary or send him a note.



BILL  
MESSEUR



ED FLINT & SCAMP





**EAA 172 Barbecue Fly-in**  
 July 13, 2013, 12:30 PM  
 Pea Patch Aerodrome (61GA), Blythe, Georgia

**EAA 172  
 Breakfast Fly-in**  
 August 10, 2013, 9:00 AM  
 Pea Patch Aerodrome (61GA), Blythe, Georgia

**EAA 172 Meeting**  
 September 14, 2013, 12:30 PM  
 Pea Patch Aerodrome (61GA), Blythe, Georgia

*Birthdays*

Billy	COUCH	07-08	Joan	SILLIMAN	07-05
Keith	GOFF	07-09	Patty	CAMERON	07-23
Richard	GABOR	07-14	Sally	LACHER	07-27
Pierre	SMITH	07-14	Jami	McMILLAN	07-28
Gary	HARDEN	07-19			

*Anniversaries*

Bill	& Cathy	JOHNSON	07-02
Danny	& Kathleen	STANTON	07-03
Daniel	& Joan	SILLIMAN	07-05
William	& Coral	BLANCHARD	07-14
Eddie	& Mary	BOOTH	07-16
Michael	& Donna	HENDRICK	07-18
Donald	& Bobbie	SHAW	07-31

## EAA 172 Night Out

Thursday, July 25: EAA 172 monthly "get-together" -- Social Meeting 6:30 PM -- This is a monthly non-business social gathering held on the fourth Thursday. This month it is at **P.F. Chang's - China Bistro**, 2450 Wrightsboro Road, Augusta, Georgia 30909. The phone number is: 706-733-0161. This is in Augusta Mall near the Chop House restaurant. Go into Augusta Mall from Wrightsboro Road then bear left after the stop sign. Website: [P.F. Chang's - China Bistro](http://P.F.Chang's-ChinaBistro.com). Directions: [Directions to P.F. Chang's](#). For questions contact Shirley Harden 706-855-1553 e-mail: [ghardensr@comcast.net](mailto:ghardensr@comcast.net) . On the Web go to [nightout.jcmservices.net](http://nightout.jcmservices.net)