

February 2014

Sunday, February 2: *SOUTH CAROLINA BREAKFAST CLUB Lancaster County McWhirter Field Airport, South Carolina (LKR)* CTAF/UNICOM: 122.725. ZIP code 29720. **A home cooked southern breakfast, great fellowship and flying!** Arrival: 7:30 - 9:00 AM. Breakfast: Between 9:00 & 9:30 - 11:00 AM. Departure: 11:30 AM. Questions: Contact Anne Hawkins (803) 432-9595. Click <http://www.airnav.com/airport/KLKR> for airport info. For driving directions click on [McWhirter Field](#). SCBC [Website](#). SCBC on [Facebook](#).

Winter Soup Party

Saturday, February 8: *EAA 172 Winter Soup Party* 12:30 PM at the Pea Patch Aerodrome (61GA). A short business meeting will be around 1:00 PM after the meal which will include Brown Bean soup, chicken and rice soup, vegetable soup, and Taco stew. Runway 01/19: 2500' x 150' sod -- fair --; GPS: N33° 18.08' N / 82° 10.46' W; Elevation 434', 4511 Boulineau Rd., Blythe, Georgia, 30805. UNICOM 122.7 mhz. For more information contact Sid Brown (762) 245-8103 *eMail: sid@thesidbrowns.com* or John Magnan (706) 547-3607 *eMail: jcm2@earthlink.net* Click [HERE](#) for directions (both land and air). Click [HERE](#) for the Mapquest directions. Click <http://www.airnav.com/airport/61GA> for airport info. For the meeting agenda click [HERE](#).

Saturday, February 8: *2014 First Triple Tree Chilly Chili Fly-In and Lunch* at the Triple Tree Aerodrome located between the towns of Woodruff and Enoree, SC, on Mary Hanna Road, Woodruff, SC 29388 (SC00). The Triple Tree staff and volunteers would like to invite all general aviation pilots and their pilots to fly into Triple Tree on Saturday February 8, 2014 for our first Chilly Chili Fly-In and Lunch. Join us for lunch on one of the coldest days of the year and land on our 7000' x 400' grass strip. You must purchase lunch tickets online no later than Friday February 7, 2014 7:00 P.M. Drive-ins are welcome. Please, no camping as this is a one day event, 9:00 am until 5:00 pm. Lunch will be at 12:30 in the hangar (gas heat) and includes: homemade chili, fresh bread, cheese, jalapenos, corn chips and dessert. Adults \$20, 12 and under \$10. All proceeds go to Triple Tree Aerodrome. No landing fees or spectator fees for this event. In the interest of keeping it simple when you land, please park in a single line, on the northwest side of the runway. Parking will begin south of the termination point of the white fence. There will be ground personnel to assist with parking and a shuttle bus to pick you up. Come on, you know that beautiful aircraft needs to get the oil circulating!

Event Information: www.tripletreeaerodrome.com **Contact:** pderrick@hartness.com
Frequencies: UNICOM 122.9; GROUND: 122.75. Runway is close-cut grass 400' x 7000'.

Airnav flying information: [SC00](#).

Mapquest driving information: [Triple Tree](#).

Sunday, February 16: *SOUTH CAROLINA BREAKFAST CLUB Rowan County Airport, Salisbury, North Carolina (KRUQ)* CTAF/UNICOM: 122.8. ZIPcode 28147. Arrival: 7:30 - 9:00 AM. **A home cooked southern breakfast, great fellowship and flying!** Breakfast: Between 9:00 & 9:30 - 11:00 AM. Departure: 11:30 AM. Questions: Contact Anne Hawkins (803) 432-9595. Click <http://www.airnav.com/airport/KRUQ> for airport info. For driving directions click on [Rowan County Airport](#). SCBC [Website](#). SCBC on [Facebook](#).

SHORT FINAL

AVweb December 16, 2013

A landing Gulfstream contacted the tower at the Greenbrier Valley Airport (KLWB) in West Virginia. The controller in the cab gave the Gulfstream clearance to land, along with a warning that buzzards were circling near the approach end of the runway.

"O.K.," replied the Gulfstream. "We've got the BB gun loaded."

NAME THAT PLANE

Benoist XIV Flying Boat

While the Ford Tri-motor is recognized as the [first commercial airliner](#), the Benoist flying boat is the first commercial airplane. With more than five years of work behind it, a replica of The Lark of Duluth (a 1913 Benoist flying boat) officially received its [airworthiness certificate](#) from the FAA in June, 2013. The [Duluth Aviation Institute](#) recognizes the two-seat aircraft as "the world's first 'commercial' airplane" and says "January 1, 2014, marked the 100 year anniversary of commercial aviation." The original aircraft was intended to fly passengers for hire and did so on Jan. 1, 1914, in Florida, and for at least three more months that followed. The flight took place between St. Petersburg and Tampa, flying a total of 23 minutes between the two cities separated by 21 miles of bay waters. The plane maintained an altitude of 15 feet across the open waters of the bay, rather than a high arch like one would see in today's flights. The Benoist XIV, two seater with a very small flight deck. was piloted by Tony Jannus, and his one paying passenger. Over the next three months of the airline's short lifetime, the Lark of Duluth and her near-sister Florida (construction number 45) carried 1,205 passengers over Tampa Bay. At the end of March, however, the city subsidy ran out, and it proved no longer profitable to continue the service. The Lark of Duluth spent the remainder of 1914 carrying joyriders in several locations around the United States, including Duluth, Conneaut Lake, and San Diego. At this latter location it was damaged in a hard landing and pronounced unsalvageable.

In 1984, a full-scale flying replica was constructed by Florida Aviation Historical Society for the 70th anniversary of the flight. This aircraft is now on loan to [Fantasy of Flight](#) in Polk City, Florida. A second replica of the 1913 Lark of Duluth was constructed by the Duluth Aviation Institute and FAA certified to commemorate the 100th anniversary of commercial aviation. It is that replica that is shown on page 1 of this newsletter. Despite efforts, the historic first commercial airline flight was not re-created on New Year's Day in this authentic version of the Benoist Airboat. It was slated to appear at EAA AirVenture 2013, but it was damaged in a non-fatal accident during its first flight test two weeks prior to the convention. The plane has been repaired to airworthy status but the city of St. Petersburg, Florida, nonetheless celebrated the centennial of the event. Kermit Weeks, founder of [Fantasy of Flight](#), near Lakeland, Florida, had been working for more than two years to build and fly this authentic version of the Benoist seaplane for the anniversary. He said he still plans to fly the aircraft sometime in 2014. The photo on the heading page is the Lark of Duluth replica on a taxiway.

(Data and information from AvwebFLASH, July 1, 2013, [eHotline](#) December 19, 2013, [AvWebBiz](#), January 1, 2014, [Flight 2014 Inc.](#), [Duluth Aviation Institute](#), [duluthaviationinstitute.org](#), [airandspacemuseum.org](#), [travelforaircraft.wordpress.com](#), [flyingmachines.ru](#))

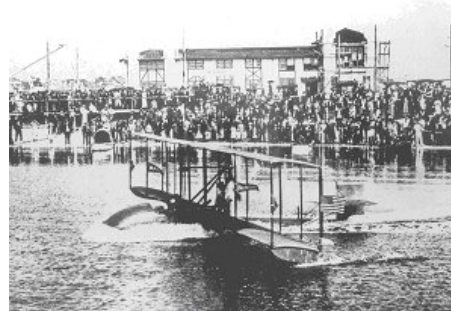
Benoist XIV Flying Boat Specifications

General characteristics

Crew: one pilot
Capacity: 1 passenger
Length: 26 ft 0 in
Wingspan: 44 ft 0 in
Empty weight: 1,250 lb.
Powerplant: 1 × Roberts straight-6, 75 hp

Performance

Maximum speed: 64 mph
Minimum speed: 31 mph.
Endurance: 3 hrs.
Range: 125 miles



A St. Petersburg-Tampa Airboat Line Benoist XIV begins its takeoff run on Tampa Bay for history's first scheduled airline flight, January 1, 1914.

If you did not receive a mailed newsletter but only the e-mailed *Pea Patch Post* and you also wanted the mailed version you need to contact the club Secretary at EAA172@jcmservices.net and indicate that you want the newsletter mailed to you. This should be done by deadline date, which for February is January 26, which is also the deadline for any articles for the February issue. Note that mail has slowed during the past year, so it may take at least two days from the mailing date for you to receive the newsletter. The production and mailing of the paper *Pea Patch Post* costs EAA 172 \$24 annually per recipient. Also note that if you have the newsletter mailed, and do not inform the EAA 172 Secretary about an address change, the Postal Service will charge you a 50 cent fee for mail forwarding.